

solar valves

Thermosyphon Arrestor Valve

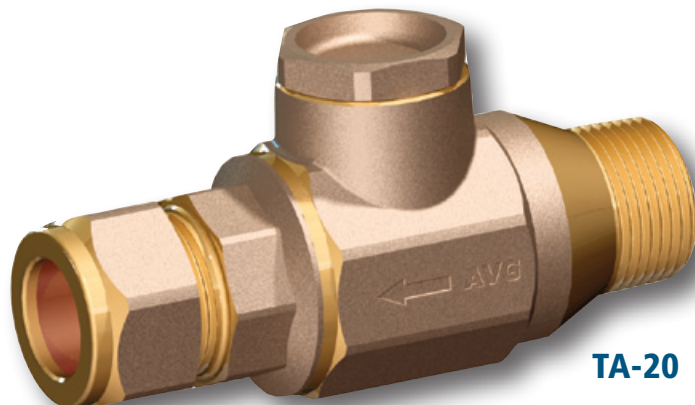
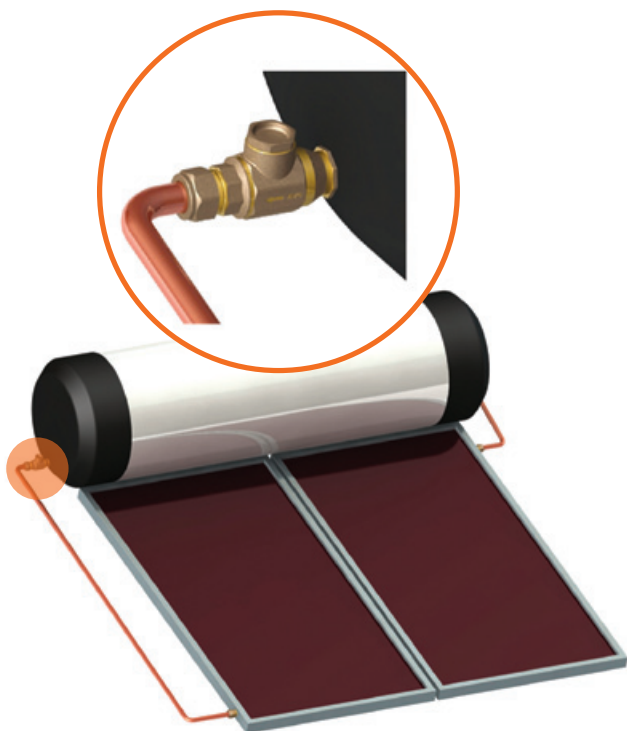
TA

THERMOSYPHON ARRESTOR VALVE

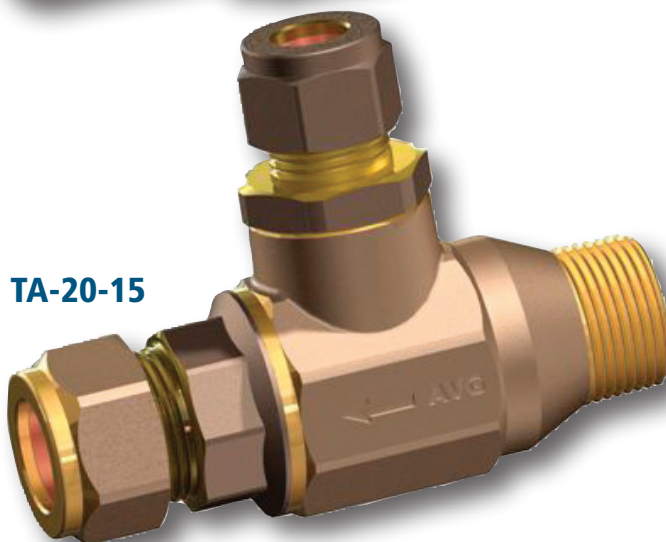
The thermosyphon arrestor valve (TA valve) is fitted to a thermosyphon solar hot water system to limit the water temperature in the storage cylinder to approximately 80°C.

The valve is located at the cold return to the collectors and closes automatically when water from the bottom of the storage cylinder, passing through the valve, reaches 60°C - 65°C. This prevents any further thermosyphon action from taking place until the temperature in the storage cylinder reduces.

When the water temperature in the storage cylinder reduces the valve opens automatically, allowing the thermosyphon action to resume.



TA-20



TA-20-15

SPECIFICATIONS

Models:	TA -20 Without cold water inlet connection TA -20-15 With 15mm (1/2") copper compression cold water inlet connection
Material :	DR BRASS
End Connections :	R 3/4" X 3/4" copper compression.
Cold Water Inlet :	15mm (1/2") copper compression.
Seal Material :	High temperature silicone rubber.
Seat Material :	DR BRASS
Spring Material :	304 Stainless steel
Max. working pressure :	1400 kPa
Max. temperature :	99°C
Wax Element :	VERNET
Activation Temperature :	60°C - 65°C